

Data-Driven **Transformative Agreement (TA)** Analysis

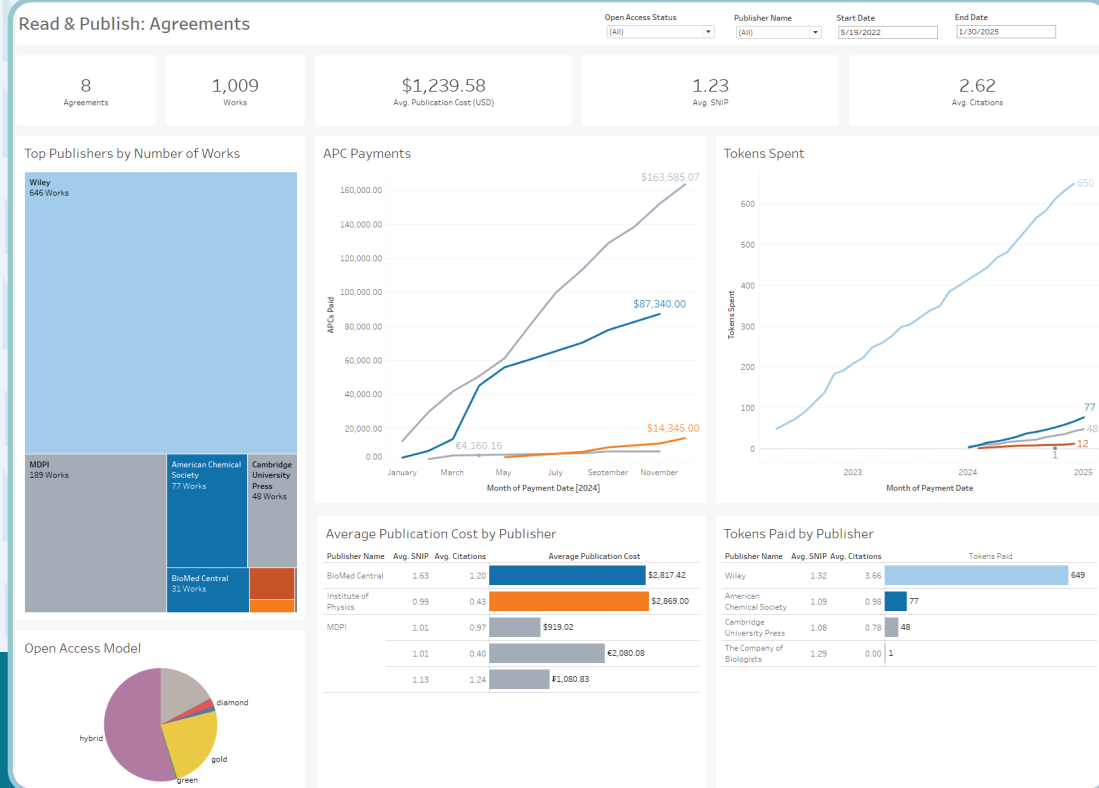
Are you struggling to maintain or gather data for your TAs?

Panorama's Read & Publish dashboards enable libraries to easily collect data to analyze the value of current and potential transformative agreements. This data-driven approach enables informed decision-making to help you:

- View the impact of your Open Access publication profile
- Compare average publishing cost by publisher with and without a TA
- Evaluate different publishing models
- Invest in the right journals

Publishers Dashboard

The **Publishers dashboard** compiles hard-to-gather, high-level data on Open Access articles and overall publication patterns at your institution. You can compare the average publishing cost, impact factor (SNIP) or times cited for each Open Access model or publisher, helping you analyze top publishers and view trends over time.



Agreements Dashboard

The **Agreements dashboard** provides powerful insights on how a TA with a publisher has been exercised. It enables you to track and compare Article Processing Charges (APC) payments and tokens used over time, while also displaying key metrics such as SNIP, Open Access model and the number of citations for each paid article.