

CINAHL

CINAHL, an essential tool for nursing research, provides indexing of the top nursing and allied health literature available including nursing journals and publications from the National League for Nursing and the American Nurses Association. Literature covers a wide range of topics including nursing, biomedicine, alternative/complementary medicine, consumer health and 17 allied health disciplines.

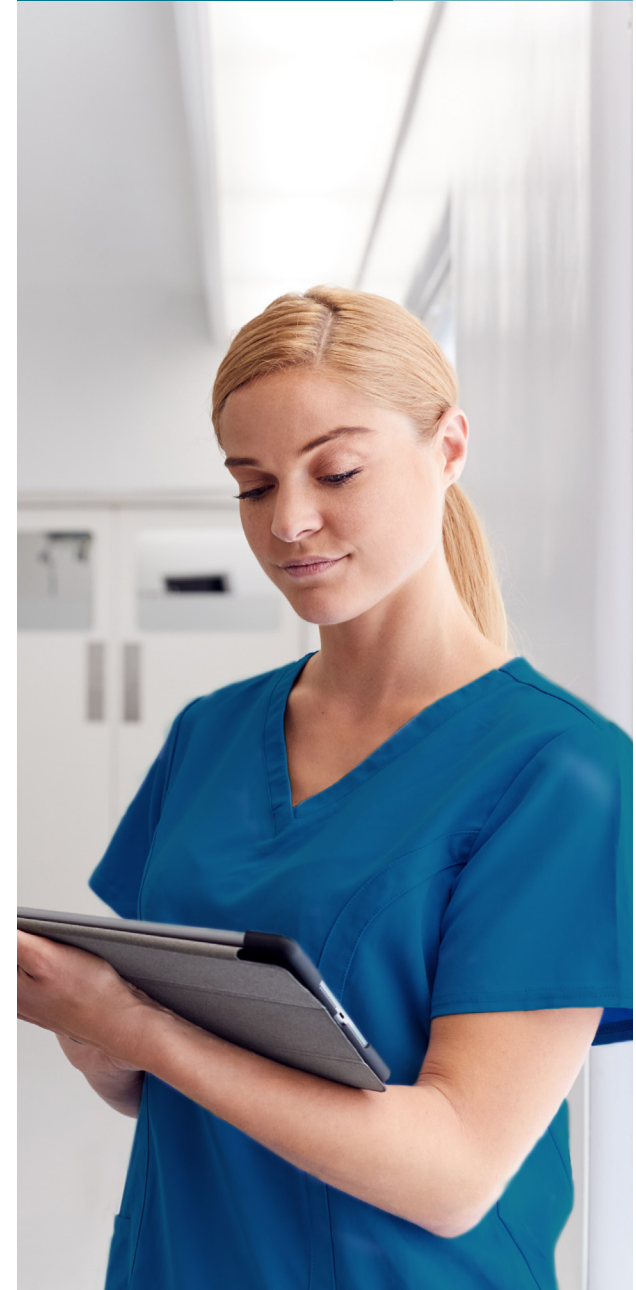
In addition, CINAHL provides access to health care books, nursing dissertations, selected conference proceedings, standards of practice, audiovisuals and book chapters. Full-text material includes 70 journals, as well as legal cases, clinical innovations, critical paths, research instruments and clinical trials.

Additional Features:

- **Easy-to-use interface** with basic and advanced search features and searchable cited references
- **Subject Headings** help users effectively search and retrieve information and follow the structure of the Medical Subject Headings (MeSH) used by the National Library of Medicine
- **More than 400** active full-text journals and magazines
- **More than 3,800** active indexed journals
- Searchable cited references for **more than 1,300 journals**

connect.ebsco.com
EBSCO

CINAHL



EBSCO DEMO

UNIVERSITY OF GEORGIA

My dashboard

- Overview
- Projects
- Saved
- Searches
- Viewed
- Holds & checkouts
- Journal alerts

Research tools

- New search
- Publications

Additional Resources

- Library Homepage
- EBSCO Connect
- Find my Organization

Search articles, books, journals & more

Searching: CINAHL

diabetic foot

AND

AND

Add fields

Basic search

Search

Filters

- Publications
- CINAHL Headings

Clear all

- Linked Full Text
- References Available
- Abstract Available

Publication Date

- All time
- Past 12 months
- Past 5 years
- Past 10 years
- Custom range

Author

English Language

Searching CINAHL

- 1 Keyword search**
Enter a keyword or phrase to search
- 2 Suggest subject terms**
Search CINAHL Headings
- 3 Apply additional fields**
- 4 Filter search**
Add filters including Publication Date, Author, Peer Reviewed, Linked Full Text and Abstract Available

Navigating the Results Page

- 1 Advanced search**
Change from the Basic Search Screen to Advanced
- 2 Search history**
Find previously viewed articles and saved searches
- 3 Choose databases**
Change the database you are searching or apply additional databases to your searches
- 4 Other Result List Functions**
 - Limit your results by Source Type
 - Refine your results using filters
 - Click on available Linked Full Text
 - Use the Projects folder to print, email or save multiple results at once

EBSCO DEMO

UNIVERSITY OF GEORGIA

My dashboard

- Overview
- Projects
- Saved
- Searches
- Viewed
- Holds & checkouts
- Journal alerts

Research tools

- New search
- Publications

Additional Resources

- Library Homepage
- EBSCO Connect
- Find my Organization

Searching: CINAHL

diabetic foot

All filters (0)

Linked Full Text

Peer Reviewed

All time

Source type

Advanced search

Results: 14,739

Relevance

Peer reviewed | Academic journal

Incidence and Risk Factors of *Diabetic Foot* Syndrome in Patients Early After Pancreas or Kidney/Pancreas Transplantation and its Association with Preventive Measures.

Diabetic foot (DF) can develop in *diabetic* patients after organ transplantation (Tx) due to several factors including peripheral arterial disease (PAD), *diabetic* neuropathy and ina... Show more

Subjects: *Diabetic Foot* Epidemiology; *Diabetic Foot* Risk Factors; *Diabetic Foot* Prevention and Control; Pancreas-Kidney Transplantation Adverse Effects; Pancreas-Kidney Transplantation Methods; Diabetes Mellitus Complications; +32 more

Published in: International Journal of Lower Extremity Wounds, Jun2024

Database: CINAHL

By: Valná, E.; Husáková, J.; Králíková, K.; Kratochvílová, S.; Gírmán, P.; Sauděk, F.; +8 more

View details

Peer reviewed | Academic journal

Evaluation of usability, adherence, and clinical efficacy of therapeutic footwear in persons with diabetes at moderate to high risk of *diabetic foot* ulcers: A multicenter prospective study.

Objective: To evaluate therapeutic footwear expectations and usability of individuals with diabetes and *foot* complications. Design: A prospective multicenter study was conducted on participan... Show more

Subjects: Orthopedic Footwear Utilization; *Foot* Care Equipment and Supplies; *Diabetic Foot* Risk Factors; Diabetes Mellitus Complications; *Diabetic Foot* Therapy; Patient Compliance Evaluation; +42 more

Published in: Clinical Rehabilitation, May2024

Database: CINAHL

By: López-Moral, Mateo; Molines-Barrero, Raúl; Altonaga-Cabo, Borja; Carrascosa-Romero, Elena; Cecilia-Matilla, Almudena; Doria-Cervos, Montserrat; +8 more

Access options

View details